

Model: ID-415 - STAND-BY RANGE

400/230 V - THREE-PHASE | 1.500 R.P.M. | 50 Hz

Automatic with amf/ats panel Stand-by Genset V2.

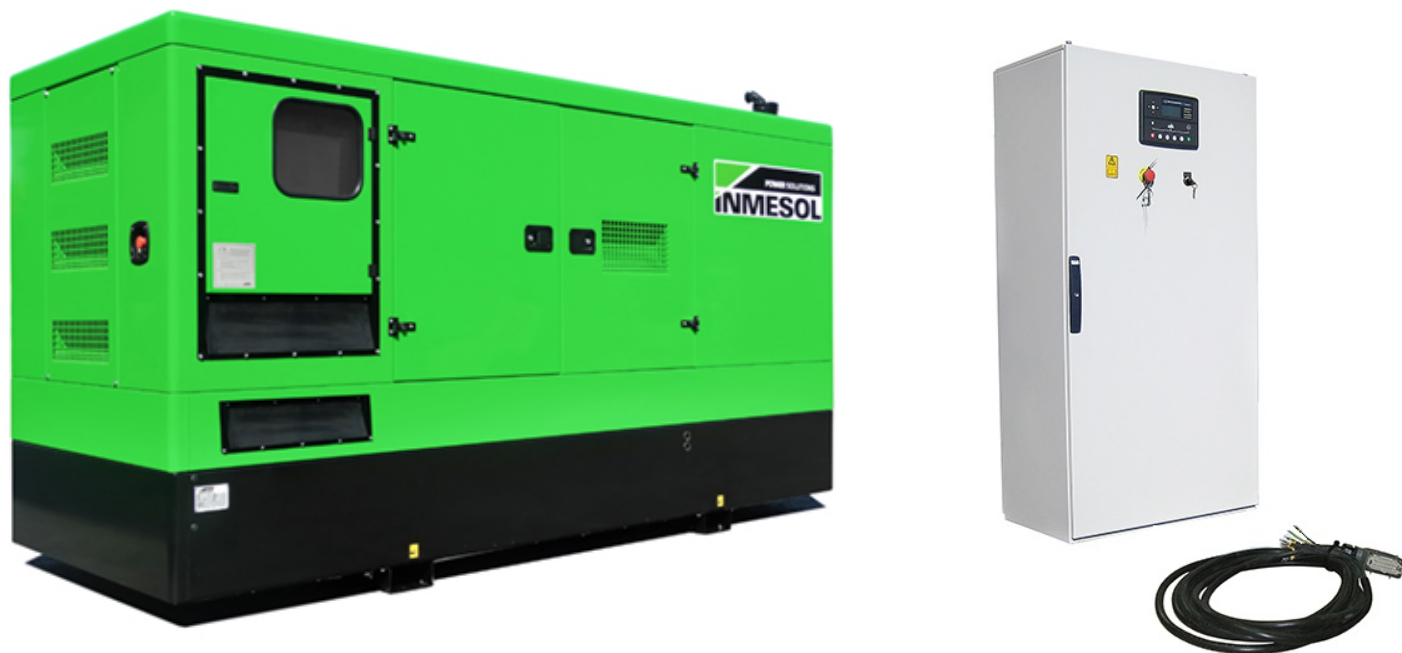


Image for guidance purposes.

### PRP

**CONTINUOUS POWER:** 380 kVA

PRP "Prime Power" norma ISO 8528-1

### LTP

**STAND-BY POWER:** 415 kVA

LTP "Limited Time Power" norma ISO 8528-1

## ENGINE

MAKE	MODEL
DEUTZ	BF6M 1015 CP

## ALTERNATOR

MAKE	MODEL
MECC-ALTE	ECO 40-1SN

VOLTAGE	HZ	PHASE	COS Ø	PRP kVA/kW	LTP kVA/kW	AMP. (LTP)
400/230	50	3	0,8	385,4/308,3	417,2/333,8	602,87

**ELECTRO EXIM SRL**

**ELECTRO EXIM SRL**  
21 Ialomicioarei St., sector 1, code 011277, BUCHAREST - ROMANIA  
Phone: 0040 21 2231347 - 0040 744 755 390 - FAX: 0040 21 2231201  
E-mail: office@electroexim.com - Web: www.electroexim.ro

Model: ID-415 - STAND-BY RANGE

400/230 V - THREE-PHASE | 1.500 R.P.M. | 50 Hz

## ENGINE CHARACTERISTICS

MAKE	MODEL
DEUTZ	BF6M 1015 CP

### General Data

Power PRP (kWm)	327.30
Power LTP (kWm)	354.30
No. cylinders	6
Cylinder capacity (L)	4.76
Diameter per stroke (mm)	132 x 145
Compression ratio	16.50
Cooling system	LIQUID
Injection	DIRECT
Suction	TURBO
Series regulator	ELECTRONIC
Fly wheel coupling	1 - 14"

### Lubrication system

Oil capacity (L)	34.00
Oil consumption (%)	0.30
Min. alarm oil pressure (bar)	3.00

### Ventilation system

Air cooling flow (m <sup>3</sup> /h)	24120
Combustion air flow (m <sup>3</sup> /h)	1478.00
Max. back pressure for fan (mbar)	-

### Exhaust system

Exhaust gas flow (m <sup>3</sup> /h)	4272
Exhaust back pressure (mbar)	50
Temp. exhaust gases (°C)	555

### Electrical system

VDC (V)	24
Battery (Ah)	2 x 180
Engine start-up (kW)	5,4

Model: ID-415 - STAND-BY RANGE

400/230 V - THREE-PHASE | 1.500 R.P.M. | 50 Hz

## ALTERNATOR CHARACTERISTICS

MAKE	MODEL
MECC-ALTE	ECO 40-1SN

### General Data

Power PRP (kVA)	400
Power LTP (kVA)	440.00
Efficiency Alt. 3/4 %	94.40
Efficiency Alt. 4/4 %	94.20
No. Poles	4
Voltage regulator	DER-1
No. wires	12
Insulation	H
Xd (%)	277.00
X'd (%)	22.50
X	14.20
Degree of protection	IP21

## GENERATOR SET CONSUMPTION

% POWER USED	LITRES/HOUR
50%	45.20
75%	68.10
100%	94.30

## DIMENSIONS, CAPACITIES, APPROXIMATE WEIGHT

Dimensions (mm)		
LENGTH	WIDTH	HEIGHT

4200                      1600                      2245

FUEL TANK (LITRES)	WEIGHT (KG)
--------------------	-------------

534    4460

NOISE LEVEL (dB (A))
----------------------

72 @ 7 m

Model: ID-415 - STAND-BY RANGE

400/230 V - THREE-PHASE | 1.500 R.P.M. | 50 Hz



## INMESOL GENERATOR SET

### GENERAL DESCRIPTION

The “INMESOL” generator set is an electrical energy generating machine which is used in places where there is **no mains supply** or when there is a MAINS failure.

The mobile elements, distribution belt, fan, etc., and those parts which reach high temperatures during operation, exhaust manifold, etc, include their corresponding protections, in compliance with the requirements of the Machinery Directive **2006/42**.

### REGULATIONS

The machine holds the “CE” marking, and the corresponding Declaration of Conformity is issued with each of them, in which it specifies that the machine complies with **R.D 842/2002 Low Voltage Regulations and with the European Directives:**

- 2006/42 on Safety in Machinery.
- 2006/95/CE on Electrical Safety.
- 2004/108/CE on Electromagnetic Compatibility.
- 2005/88/CE on NOISE EMISSIONS by equipment for outdoor use (for SOUNDPROOF GENERATOR SETS).

Model: ID-415 - STAND-BY RANGE

400/230 V - THREE-PHASE | 1.500 R.P.M. | 50 Hz

**SB** **STAND-BY**  
RANGE

**Scope of supply**

**V2** **Gensets WITH AMF/ATS PANEL and 4 Pole Circuit Breaker**



Engine/alternator monobloc directly connected and installed via silent blocks on a frame made from high tensile electro welded steel profiles that are treated with degreasing liquids and applied with a phosphate coat and Polyester (QUALICOAT) paint.
Canopy of steel sheet sound proofed with fireproof rockwool, and treated with degreasing liquids and applied with a phosphate coat and Polyester (QUALICOAT) paint.
Sealed chassis
Fuel tank integrated in the chassis provided with fuel level gauge and fuel lines to the engine.
Engine with mechanical engine driven pusher fan.
Residential silencer with -35 db(a) noise reduction with exhaust tube and protection cap.
Thermal and magnetic circuit breaker
Battery charge alternator.
Starter battery complete with cables to the engine and pole protection.
Installation prepared for earthing spike (spike not included).
Security protection for belts and moving parts as well as on electrical component.

External emergency stop push button.
Manual engine oil extraction pump.
Self excited and auto regulated alternator.
Integrated lifting hook for single point lifting with crane, gensets up to 450 kVA (Except in swing-out cover mode)
Base frame prepared for trailer kit
Standard electronic speed governor on engines from 220 kVA and up.
Electric control cubicle with digital control module, automatic mains failure, manual start or remote start on signal with change over switch in the same cabinet.
Battery charger for gen set with 12VCC battery (2A).
Battery charger for gen set with 24VCC battery (5A).
Electric engine coolant preheating on gen sets with automatic mains failure controller.
Horizontal outlet for hot air (till canopy 4200x1600x2245)
Control cable of 6 m

**OPTIONS**

Earth fault relay
Integral additional socket panel (from 20 kVA till 400 kVA PRP)
Residential silencer

**V1** PREWIRED VERSION FOR AMF

**V2** GENSETS WITH AMF/ATS PANEL AND 4 POLE CIRCUIT BREAKER

**V3** GENSET WITH AMF CONTROL PANEL BUT WITHOUT ATS PANEL AND SEPARATED ATS PANEL

**ELECTRO EXIM SRL**

**ELECTRO EXIM SRL**  
21 Ialomicioarei St., sector 1, code 011277, BUCHAREST - ROMANIA  
Phone: 0040 21 2231347 - 0040 744 755 390 - FAX: 0040 21 2231201  
E-mail: office@electroexim.com - Web: www.electroexim.ro

Model: ID-415 - STAND-BY RANGE

400/230 V - THREE-PHASE | 1.500 R.P.M. | 50 Hz

**DSE 7320 AUTOMATIC CONTROL PANEL WITH AMF/ATS PANEL**

**V2**

PROTECTION, DISTRIBUTION AND AUTOMATIC CONTROL panel which starts the generator set when it detects a mains failure and stops it when the mains is restored with the control unit DSE 7320. It incorporates change over switch. The entire assembly is in a steel enclosure separated from the gen set.



Image for guidance purposes.

It has the following:

## 1. EMERGENCY STOP PUSHBUTTON

## 2. PROTECTIONS:

Magnetothermal switch (preheating resist.) 2P (16 A)

Protection fuses for control module

## 3. BATTERY CHARGER

**V1** PREWIRED VERSION  
FOR AMF

**V2** GENSETS WITH AMF/ATS PANEL  
AND 4 POLE CIRCUIT BREAKER

**V3** GENSET WITH AMF CONTROL PANEL BUT WITHOUT ATS PANEL  
AND SEPARATED ATS PANEL

**ELECTRO EXIM SRL**

**ELECTRO EXIM SRL**  
21 Ialomicioarei St., sector 1, code 011277, BUCHAREST - ROMANIA  
Phone: 0040 21 2231347 - 0040 744 755 390 - FAX: 0040 21 2231201  
E-mail: office@electroexim.com - Web: www.electroexim.ro

Model: ID-415 - STAND-BY RANGE

400/230 V - THREE-PHASE | 1.500 R.P.M. | 50 Hz

**DSE 7320 AUTOMATIC CONTROL PANEL WITH AMF/ATS PANEL**

**V2**

## 4. DSE 7320 MKII PROTECTION CONTROL MODULE.

### LCD SCREEN:

It has a digital LCD screen, which provides easy reading of the information regarding the ENGINE, ALTERNATOR, MAINS and CHARGING.

ENGINE:	ALTERNATOR AND CHARGE:	MAINS:
Coolant temperature	Voltages between phases and between phases and neutral.	Frequency
Oil pressure	Intensities	Phase rotation order
Turning speed (rpm)	Frequency	Voltages between phases and neutral (L1-N, L2-N, L3-N).
Fuel level	Active Power (kW)	Voltages between phases and (L1-L2, L2-L3, L1-L3).
Battery voltage	Reactive Power (kVA)	Earth current
Battery alternator voltage.	Apparent Power (kVA)	
Operating hours	Cos phi	
Number of start-ups	Active energy meter (kW-h)	

### CONTROL OF THE SET:

STARTS and STOPS the set AUTOMATICALLY when mains failure is detected and when it is restored, respectively.

It can also operate MANUALLY.

### PROTECTION OF THE ENGINE AND ALTERNATOR, WITH THE ALARMS ACTIVATED:

ENGINE:	ALTERNATOR:	MAINS:
Low oil pressure	Low and High Voltage	Low and High Voltage
High coolant temperature	Low and High Frequency	Low and High Frequency
Low and High battery Voltage.	Overload due to Intensity (A)	
Failure of the alternator to charge batteries	Short-circuit	
Low fuel level	Negative Phase Sequence.	
	Power Overload (KW-kVA)	
	Load control:	
	Connection and disconnection of artificial loads.	
	Disconnection of non-essential loads	

### OTHER CHARACTERISTICS:

The real-time clock provides an exact record of events.	Fully configurable via software and PC.	Programmer Clock with multiple maintenance events which can be configured for the optimal operation of the engine. Weekly and/or monthly programming of up to 16 starts and stops per week.
Extensive number of configurable inputs and outputs.	Modbus RTU	ALTERNATIVE CONFIGURATIONS, which open up the working possibilities
Configurable alarms and timers.	Possibility of SMS text messages	
USB connectivity	Communications Ethernet, RS 232 and RS 485	

**V1** PREWIRED VERSION FOR AMF

**V2** GENSETS WITH AMF/ATS PANEL AND 4 POLE CIRCUIT BREAKER

**V3** GENSET WITH AMF CONTROL PANEL BUT WITHOUT ATS PANEL AND SEPARATED ATS PANEL

**ELECTRO EXIM SRL**

**ELECTRO EXIM SRL**  
21 Ialomicioarei St., sector 1, code 011277, BUCHAREST - ROMANIA  
Phone: 0040 21 2231347 - 0040 744 755 390 - FAX: 0040 21 2231201  
E-mail: office@electroexim.com - Web: www.electroexim.ro

Model: ID-415 - STAND-BY RANGE 400/230 V - THREE-PHASE | 1.500 R.P.M. | 50 Hz

**DSE 7320 AUTOMATIC CONTROL PANEL WITH AMF/ATS PANEL**

**V2**

## 5. PROTECTIONS

MAGNETO. PROTECTION (A)	EARTH LEAK PROTECTION	DISTRIBUTION	AMF/ATS PANEL
630A, 4P	Opcional	Direct from circuit breaker	630

**V1** PREWIRED VERSION FOR AMF

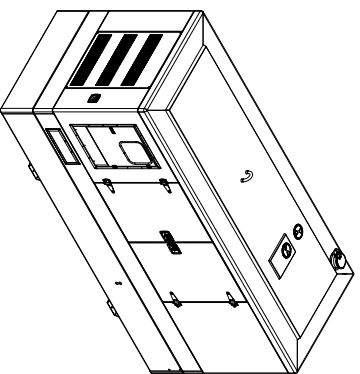
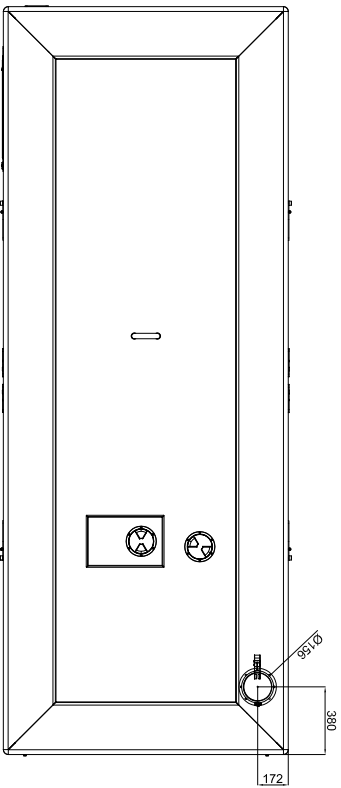
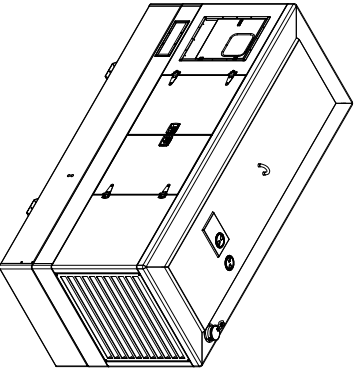
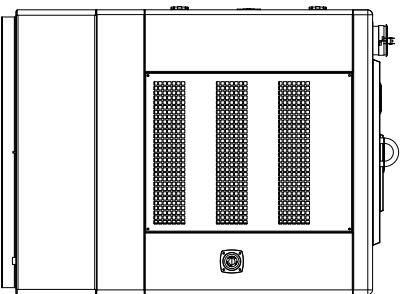
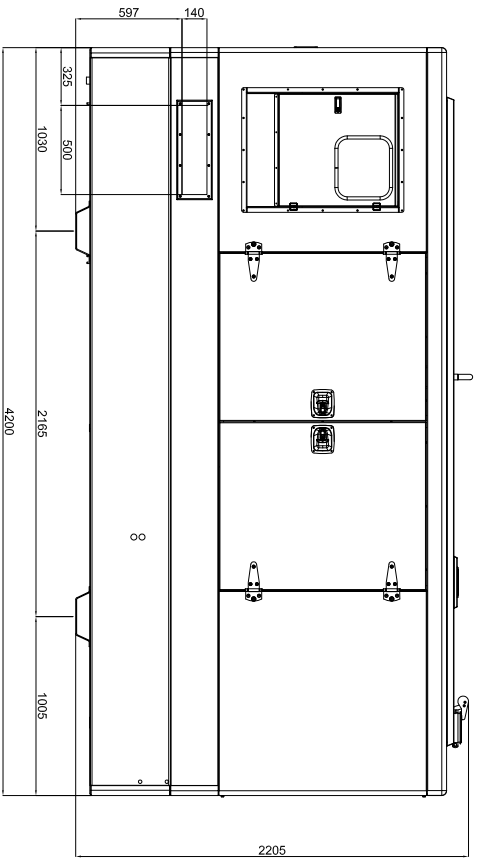
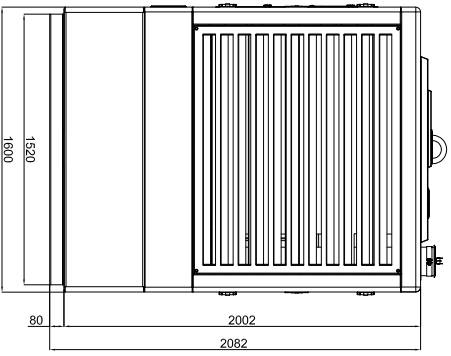
**V2** GENSETS WITH AMF/ATS PANEL AND 4 POLE CIRCUIT BREAKER

**V3** GENSET WITH AMF CONTROL PANEL BUT WITHOUT ATS PANEL AND SEPARATED ATS PANEL

**ELECTRO EXIM SRL**

**ELECTRO EXIM SRL**  
 21 Ialomicioarei St., sector 1, code 011277, BUCHAREST - ROMANIA  
 Phone: 0040 21 2231347 - 0040 744 755 390 - FAX: 0040 21 2231201  
 E-mail: office@electroexim.com - Web: www.electroexim.ro





FUEL TANK CAPACITY = 534 LTS

GENSET MODEL BUILT INSIDE THIS CANOPY

IVECO	IL-330	IL-385	IL-440	IL-550
DEUTZ	ID-330	ID-415		
MTU	IT-310	IT-330	IT-440	
VOLVO	IV-330	IV-385	IV-415	IV-440
PERKINS	IP-300	IP-330	IP-385	IP-440
PERKINS	IP-355	IP-450	IP-520	IP-580

**IMMESOL** POWER SOLUTIONS

Este documento es una herramienta de trabajo que proporciona información general sobre los productos y servicios de IMMESOL. No debe considerarse un contrato ni una oferta de venta. Las especificaciones de los productos y servicios de IMMESOL pueden cambiar sin previo aviso. Para más información, consulte el sitio web de IMMESOL.

CODIGO

PESO

ESCALA

PROYECTO: **SOUNDPROOFED CANOPY 4200x2220x1600 WATERTIGHT**

MODIFICADO	A.AGUILAR	04/08/2015	MATERIAL
DISEÑADO	J.J.BELAR	18-JUN-2012	TOLERANCIA GENERAL
COMPROBADO	J.J.SOLANO	18-JUN-2012	UDS

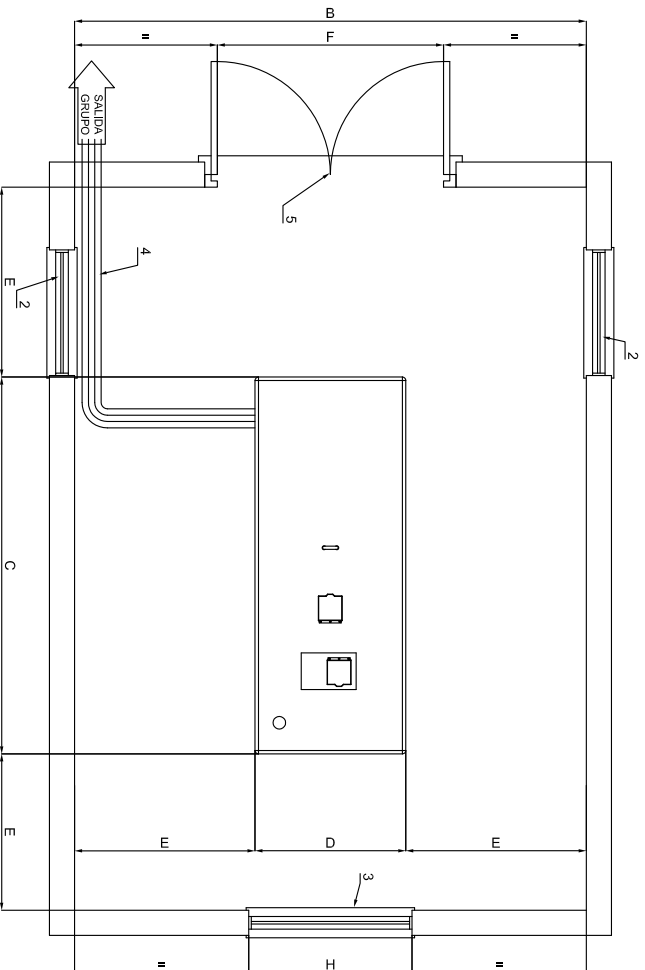
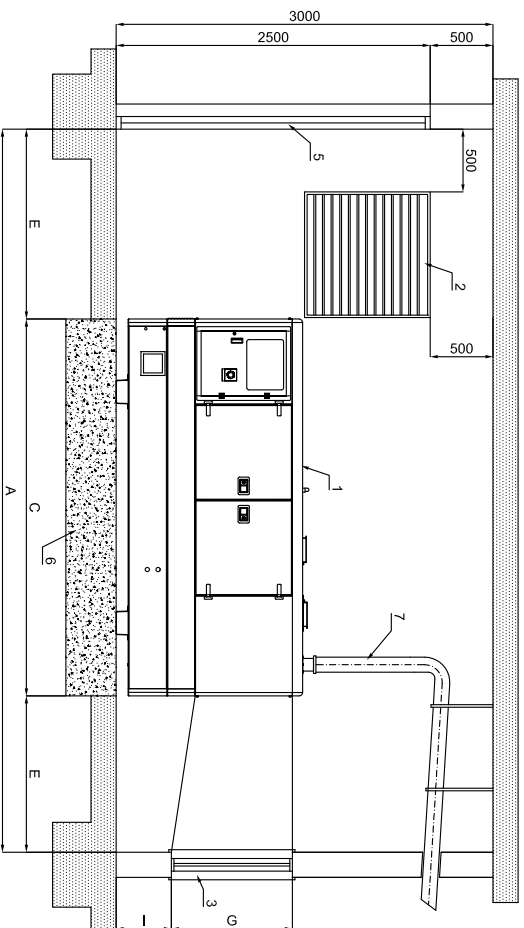
DESIGNACION: **SOUNDP. CANOPY 4200x2220x1600 300-400 Kw**

EXFEDIENTE:

Nº MODI:

Nº PLANO:

MARCA:



POTENCIA (Kva)	DIMENSIONES MINIMAS DE SALA SEGUN POTENCIA										SECCION HUECO ENTRADA AIRE
	A	B	C	D	E	F	G	H	I	PESO	
<b>8-15 ABATIBLE</b>	3365	2800	1365	800	1000	900	700	850	450		2x0,50 m <sup>2</sup>
10-15	3600	2900	1600	900	1000	1100	700	850	450	804	2x0,50 m <sup>2</sup>
20-30	4000	2950	2000	950	1000	1200	750	850	450	980	2x0,50 m <sup>2</sup>
<b>40-60-75</b>	4500	3100	2500	1100	1000	1400	900	1100	450	1680	2x0,90 m <sup>2</sup>
<b>85-105-130</b>	5000	3200	3000	1200	1000	1400	900	1100	450	2120	2x1,00 m <sup>2</sup>
<b>150-180-200-250</b>	5600	3350	3600	1350	1000	1550	1150	1300	500	2340	2x1,00 m <sup>2</sup>
300-400	6200	3600	4200	1600	1000	1800	1250	1600	650	6340	2x3,00 m <sup>2</sup>
450-470-500-510-600-650	6800	4000	4800	2000	1000	2200	1300	1800	725	6900	2x3,50 m <sup>2</sup>

- NOMENCLATURA**
- 1.- GRUPO ELECTROGENO
  - 2.- HUECO ENTRADA DEL AIRE
  - 3.- TUNEL EXPULSION DEL AIRE
  - 4.- BANDEJA PASACABLES
  - 5.- PUERTA DE ACCESO
  - 6.- BASE HORMIGON ARMADO H-175
  - 7.- TUBO DE ESCAPE

**CALCULO ESPESOR LOSA DE HORMIGON**

$$E = \frac{W}{d \times D \times C}$$

E = altura bloque de hormigon  
 W = peso total grupo electrogeno  
 d = densidad del hormigon (2400 kg/m<sup>3</sup>)  
 D = anchura bloque de hormigon (m)  
 C = longitud bloque de hormigon (m)

EL Ø DE LA TUBERIA DE EXTENSION DEL ESCAPE PUEDE SER EL MISMO QUE EL DEL SILENCIADOR HASTA 5 m. PARA DISTANCAS MAYORES DE 5 m. DEBE AUMENTARSE EL Ø DE LA TUBERIA 10 mm POR CADA 10 m MAS DE DISTANCIA ENTRE EL GRUPO ELECTROGENO Y LA SALIDA EXTERIOR

		<b>GRUPO INSONORIZADO</b>	
PROYECTO:			
Una declaración de cumplir con la presente una obligación legal, de conformidad con el artículo 17 de la Ley 37/2003, de 6 de noviembre, de acceso a la información pública, en relación con el presente expediente de licitación, con la siguiente información que se indica a continuación: CODIGO PESO ESCALA	MODIFICADO DIBUJADO COMPROBADO DENOMINACION: GRUPO INSONORIZADO DIMENSIONES DE SALA	A.GUILAR J.GIBELAR J.L.SOLANO	02-Ene-2015 27-Feb-2008 04-Oct-2012
	MATERIAL		
	TOLENCANJA GENERAL		
	UDS:		
	EXPEDIENTE:		
	Nº MODI		
	Nº PLANO		
	MARCA		